

## MOTOROLA CANOPY™ WIRELESS BROADBAND

### Cluster Management Module micro (CMMmicro)



#### Reduce Costs of System Installation and Operation

Service providers need to offer superior service to their customers at the lowest cost. The Cluster Management Module micro (CMMmicro) allows network operators to reduce the time and labor cost of system installation and maintenance in partial Canopy clusters. The CMMmicro provides reliable network synchronization with a more integrated solution including:

- 8 access ports
- Managed switch
- Smaller, light weight enclosure
- Reduced cabling

Designed to deliver consistent and reliable wireless broadband service, the Canopy system gracefully scales to support large deployments. The CMMmicro is the heart of the system's synchronization capability which allows network operators to re-use frequencies and add capacity while consistently ensuring consistency in the quality of service to customers. As a result, subscribers can experience carrier grade service – even those at the outer edge of the network.

#### REDUCED COST OF OPERATIONS

##### Reduced Cabling Between System Modules

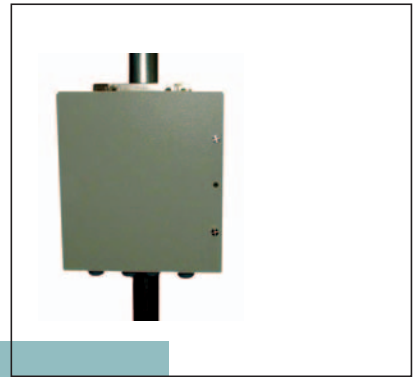
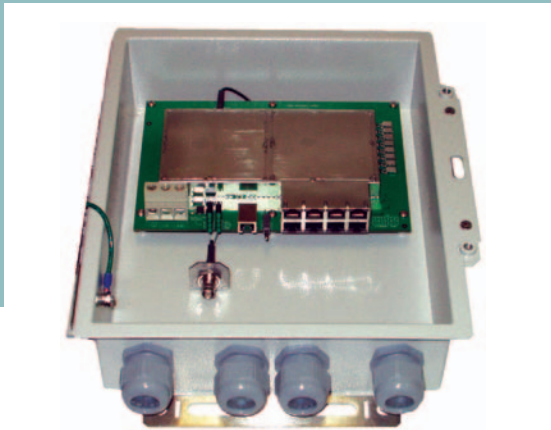
There is only one cable going from the CMM to each Access Point (AP) module carrying the Ethernet connection, synchronization pulse and GPS data. Integration reduces the number of points of potential failure in the module and improves the quality of service by reducing down time, saving service providers hundreds of dollars in the labor and material cost of cabling to each of the radios and backhauls. Integrated cabling also reduces the time and costs associated with system troubleshooting and maintenance. For network operators interested in customizing their CMM to include specific equipment such as a router, Motorola offers the CMM2 with



physical access to the connections between the switch and the AP.

##### Smaller Enclosure

The smaller enclosure of the CMMmicro reduces the time and cost associated with installation labor. The enclosure requires 25% of the space of the larger CMM and its 8 lb weight is 1/3 of the larger CMM.



As a result, the CMMmicro can be installed quickly by one person. The CMMmicro can be placed on either a tower or in a convenient location which allows network operators more flexibility in placing network equipment. This reduces the overall cost of operations and improves profitability.

#### **Managed Switch**

A CMMmicro can be managed with a Network manager using Simple Network Management Protocol (SNMP). Most functionality provided by the CMMmicro's web browser interface is supported by the Canopy Enterprise Management Information Base (MIB) included in Canopy Release 4.0 Software.

#### **Direct Connect to Backhaul Modules**

The CMMmicro connects directly with backhaul modules co-located with APs. This saves network operators the time and expense of installing a separate bridge or switch to interconnect radio and backhaul modules.

#### **Availability**

The Canopy CMMmicro is currently available and may be ordered now.

## **SPECIFICATIONS**

### **Electrical**

Power	24 VDC @ 0.3 AMP separate 115/230 V AC to 24 DC power converter
-------	--

### **Environmental**

Operating temperature	40°C to +55°C -40°F to +131°F
Operating humidity	100% condensing

### **Dimensions**

Approximately 12.00" H x 10.00" W x 3.00" D  
Approximate Weight 8.0 lbs.

For more information about how the Canopy system can extend your network and services, and provide competitive advantage and outstanding ROI, call 1-866-515-5825 or visit us at:

[www.motorola.com/canopy.com](http://www.motorola.com/canopy.com)



MOTOROLA and the Stylized M Logo are registered in the U.S. Patent and Trademark Office. Canopy is a trademark of Motorola. All other product or service names are the property of their respective owners. ©Motorola, Inc. 2003.